

THE MUSICMANtm

MUSIC-ON-HOLD SOURCE

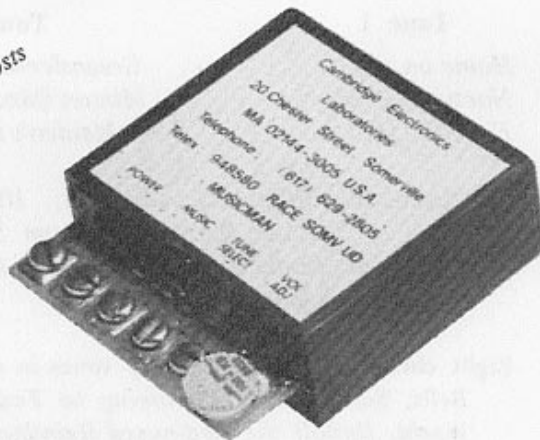
for

PABXs — Key Systems — Special Service Equipment

improves customer satisfaction

cuts costs

cuts troubles



actual size

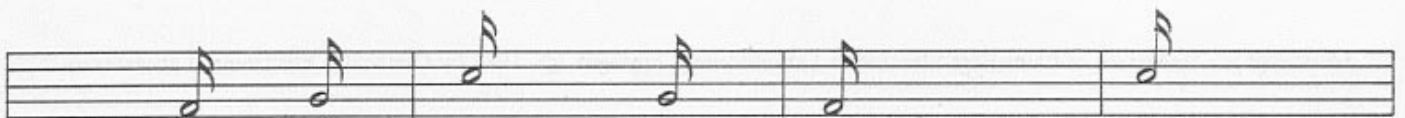
Today's increasingly sophisticated telecom users
require music-on-hold — without tears!

Use Musicmantm!

Now the music-on-hold port of your key system, PABX or special service equipment can be fed by this tiny, self-contained, pleasant-to-the-ear digital music source — powered from its own host equipment.

- Do away with radios that detune — or give the held party an earful of commercials.
- Do away with expensive cassette tapes that break, wear and clog.
- Do away with messy line cords.
- One tune or ten tunes, or musical chime.

Musicmantm: tiny! no cords! no maintenance! inexpensive!



Specifications – Standard from Stock

- Input
- Musicman-1 and Musicman-chime: 12-48 volts a.c. or d.c., interchangeably
 - Musicman-10: 12 volts a.c. or d.c., or 24 volts d.c.; 48 volt d.c. option
- Output
- Output power adjustable, adequate for any impedance from 8 ohms to 600 ohms
 - Musicman-1: Each model can play either of two tunes by switch selection

	Model	Tune 1	Tune 2
Choice of sounds	MM-1/HG	<i>Home on the Range</i>	<i>Greensleeves</i>
	MM-1/NM	<i>Nocturne (Chopin)</i>	<i>Minuet (Mozart)</i>
	MM-1/FA	<i>For Elise (Beethoven)</i>	<i>A Maiden's Prayer (Paderewski)</i>

- Musicman-10X: Eight cheery Christmas holiday tunes in continuous succession: *Jingle Bells, Santa Claus Is Coming to Town, Silent Night, Joy to the World, Rudolf the Red-nosed Reindeer, I Wish You a Merry Christmas, O Come All Ye Faithful, Hark the Herald Angels Sing*
 - Musicman-chime: Pleasing-to-the-ear chime tone repeated every 10 seconds
- Size
- 16 x 46 x 50 mm (5/8" x 1-7/8" x 2")
- Weight
- 50 grams (1-7/8 ounces)
- Mounting
- Dual-sided adhesive
- Terminals
- Screw

Manufacturer guarantees its products to be free of failure for a period of one year from date of shipment. Any unit returned within this one-year period will be replaced free of charge unless Manufacturer determines that the failure is due to improper installation, physical damage, or operation outside of specified limits. This warranty is in lieu of all other warranties implied or expressed. Manufacturer shall not be liable for operation delays or consequent damages of any type. 6/88

CAMBRIDGE ELECTRONICS LABORATORIES

Twenty Chester Street Somerville, Massachusetts 02144-3005 USA
Telephone +1 617 629-2805 Telex 948580